



Astell Road, London, SE3 9EH

£410 Per Week

A 1 bedroom apartment for rent located in the heart of Kidbrooke Village SE3.

Comprising of open plan living room with luxury fitted kitchen, access to spacious balcony, bedroom with built in wardrobes and a luxury shower room suite.

Residents will also benefit from a 24-hour concierge service, gym and fitness room.

Comes furnished.

Property available from 27.07.2026

- 1 BEDROOM
- 24HR CONCIERGE TEAM
- BALCONY
- 4TH FLOOR
- GYM
- AVAILABLE FROM 27.07.2026
- FURNISHED
- VIEWS OVER PARK

Astell Road, London, SE3 9EH



BUFTON HOUSE



RECEPTION ROOM



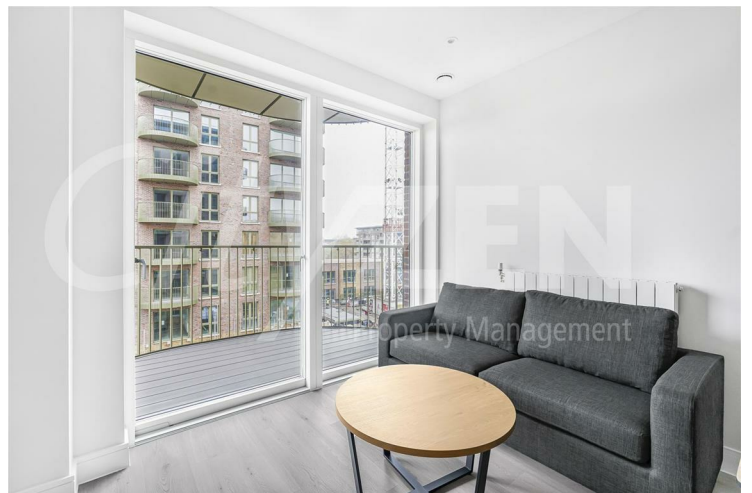
VIEW FROM BALCONY



KITCHEN



BALCONY



RECEPTION ROOM

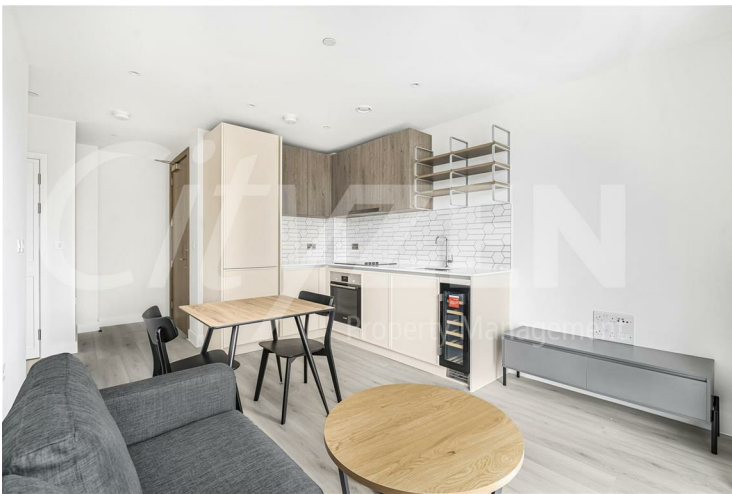
Astell Road, London, SE3 9EH



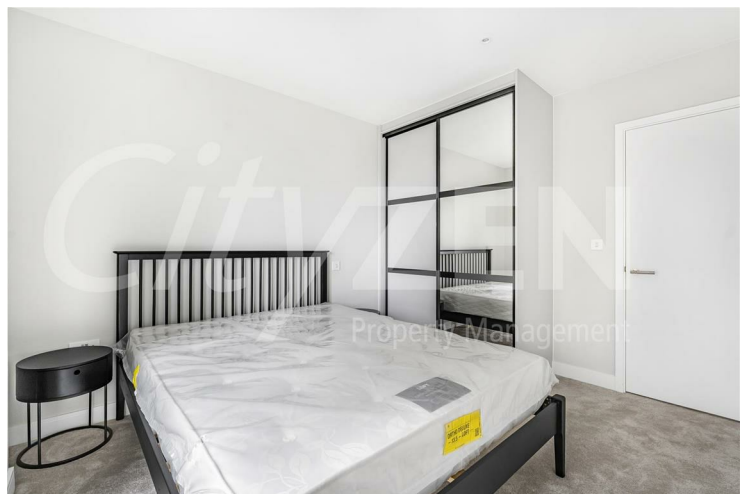
RECEPTION ROOM



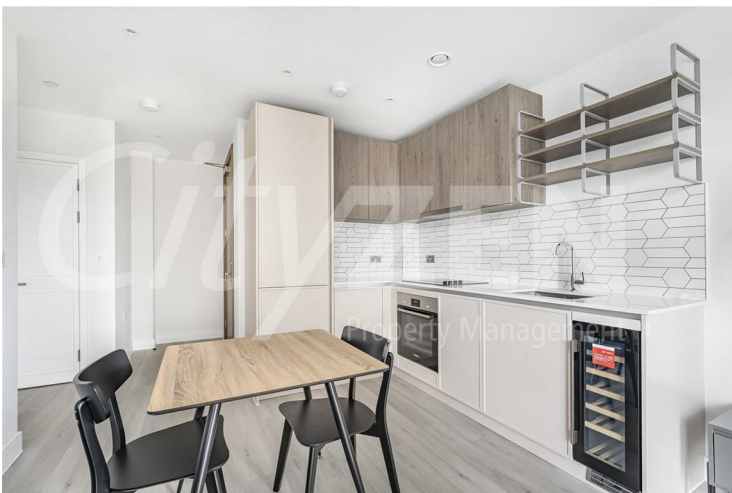
BEDROOM



RECEPTION ROOM



BEDROOM



RECEPTION ROOM



BEDROOM

Astell Road, London, SE3 9EH



KITCHEN

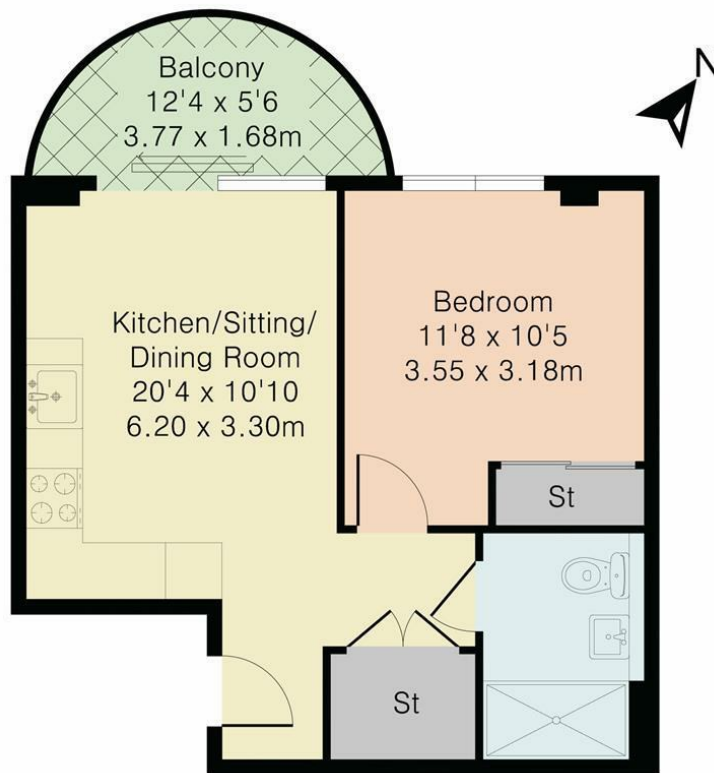


BUFTON HOUSE



SHOWER ROOM

Approximate Gross Internal Area 388 sq ft - 36 sq m



Fourth Floor



Although Pink Plan Ltd ensures the highest level of accuracy, measurements of doors, windows and rooms are approximate and no responsibility is taken for error, omission or misstatement. These plans are for representation purposes only as defined by RICS code of measuring practise. No guarantee is given on total square footage of the property within this plan. The figure icon is for initial guidance only and should not be relied on as a basis of valuation.



Energy Efficiency Rating

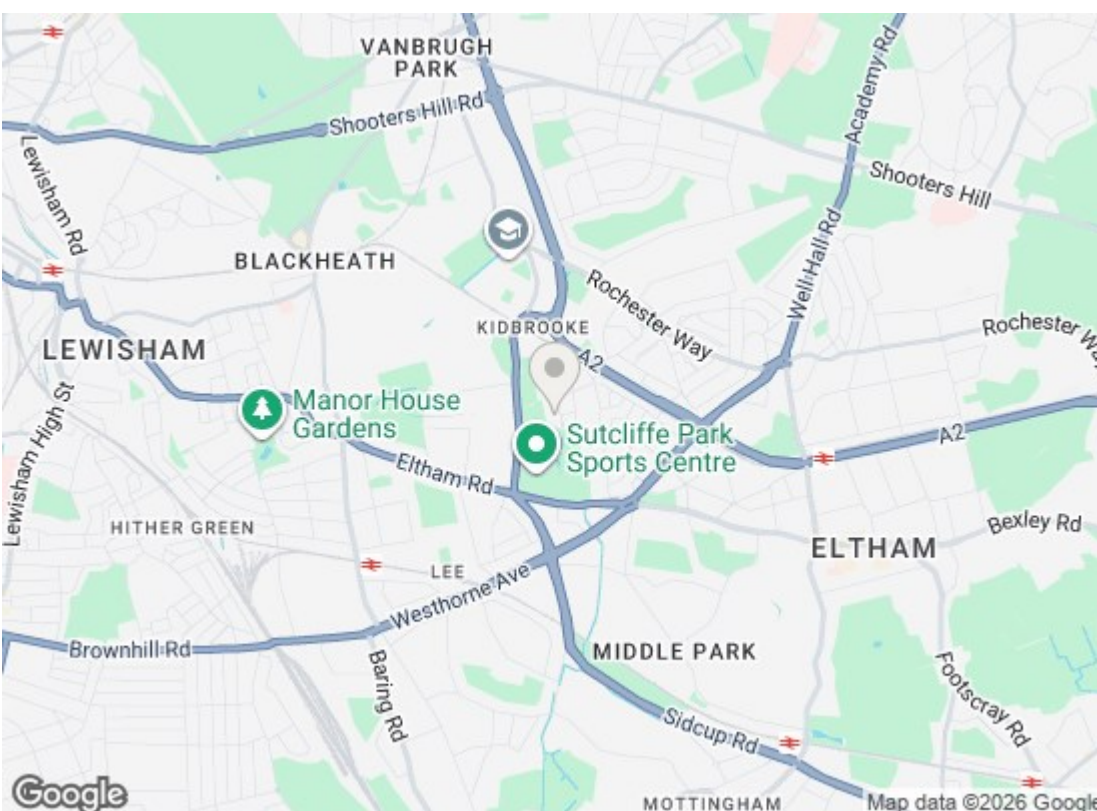
	Current	Potential
Very energy efficient - lower running costs		
(92 plus) A		
(81-91) B	84	84
(69-80) C		
(55-68) D		
(39-54) E		
(21-38) F		
(1-20) G		
Not energy efficient - higher running costs		

EU Directive 2002/91/EC

England & Wales Environmental Impact (CO₂) Rating

	Current	Potential
Very environmentally friendly - lower CO ₂ emissions		
(92 plus) A		
(81-91) B		
(69-80) C		
(55-68) D		
(39-54) E		
(21-38) F		
(1-20) G		
Not environmentally friendly - higher CO ₂ emissions		

EU Directive 2002/91/EC



We have prepared these property particulars as a general guide to a broad description of the property. They are not intended to constitute part of an offer or contract. We have not carried out a structural survey and the services, appliances and specific fittings have not been tested. All photographs, measurements, floorplans and distances referred to are given as a guide only and should not be relied upon for the purchase of carpets or any other fixtures or fittings. Lease details, service charges and ground rent (where applicable) and council tax are given as a guide only and should be checked and confirmed by your Solicitor prior to exchange of contracts.